

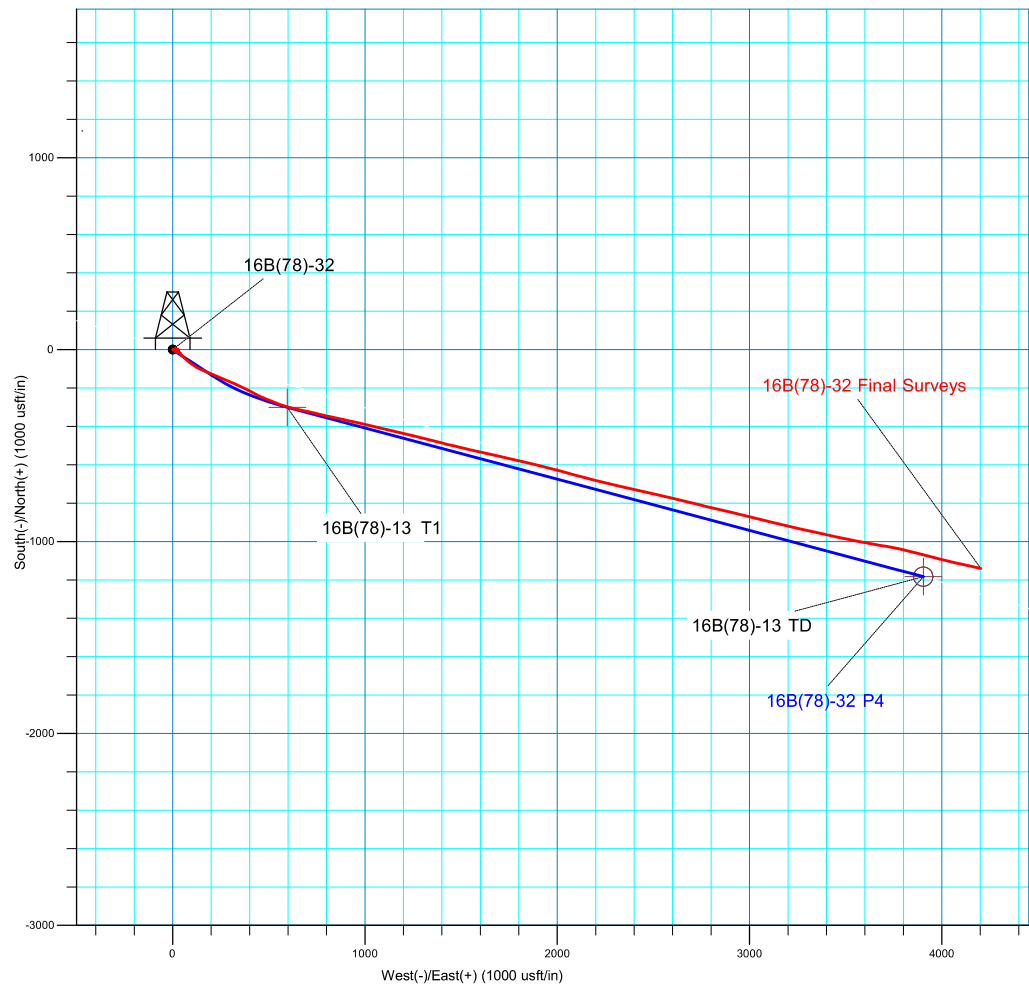
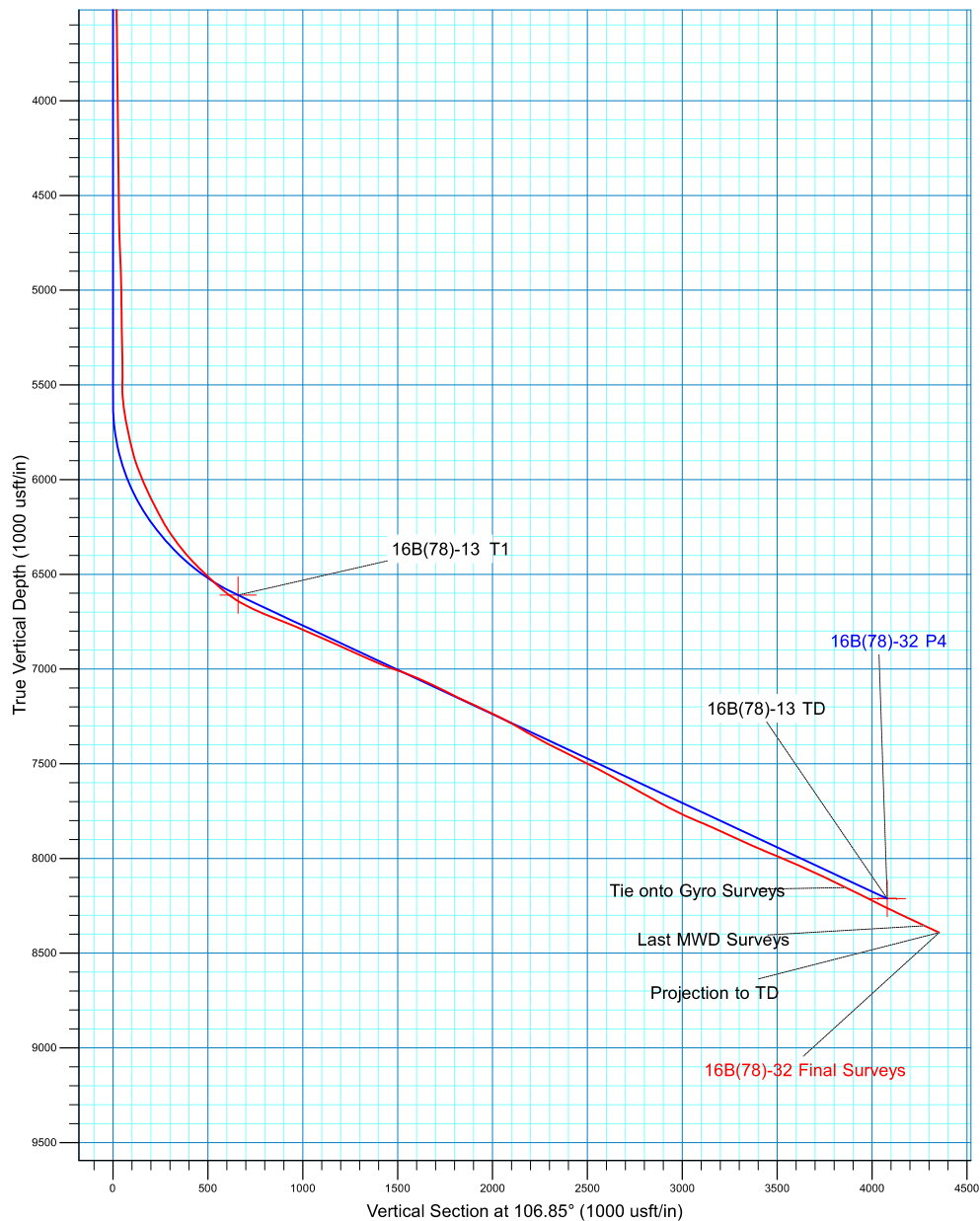
Utah Forge

Project: Beaver (University of Utah)
 Site: Utah Forge
 Well: 16B(78)-32
 Wellbore: 16B(78)-32
 Design: 16B(78)-32 Final Surveys

PROJECT DETAILS: Beaver (University of Utah)

Geodetic System: Universal Transverse Mercator (US Survey Feet)
 Datum: NAD83 Utah - HARN
 Ellipsoid: GRS 1980
 Zone: Zone 12N (114 W to 108 W)
 System Datum: Mean Sea Level
 Local North: Grid

Azimuths to Grid North
 True North: 1.18°
 Magnetic North: 12.36°
 Magnetic Field
 Strength: 49830.6nT
 Dip Angle: 64.00°
 Date: 12/31/2021
 Model: HDGM2021_FILE



Design: 16B(78)-32 Final Surveys (16B(78)-32/16B(78)-32)

Created By: SDI Date: